



ELEGANCE AND EVOLUTION OF THE LVT

COMPANY

The history of Floover began to take shape in 2006 with the union of Andrea Prati and Joan Ferrer, friends and co-owners with extensive experience in the flooring business. Based on the needs and requests of their customers, they developed a new product, Floover, multilayer rigid flooring with designs based on high-end vinyl with the Unilin click system. Later, they developed other versions and incorporated waterproof unlimited designs with remarkable success.

The aim of Floover is the continuous search for new and amazing products always based on the latest design and fashion, intending to improve the quality of life. Innovation and imagination have always been the basis of the brand and are key to its reputation in the market place, involving designers and architects to provide added value to the product. To date, Floover has achieved significant international presence.



PRODUCTS

Floover's main production is located in Müstair, Switzerland, where the entire production process complies with Swiss law and with the European norms and standards, in addition to the very strict quality controls.

Floover provides products for both domestic and commercial use, always using new technologies and creating solutions demanded by the market, from gluing systems (Glue Down), through the floor with click system, to exterior solutions. All Floover products are easy to install and are specifically designed for high durability and longevity. All this is complemented with accessories needed to complete any project.

The extensive collection of designs can be installed in any space, including wet areas like bathrooms or terraces, Floover is the ultimate solution to your project.

SHOPS AND BUSINESS

- Stefanel (Poland)
- Sagrada Familia (Spain)
- Bütler (Switzerland)
- Shape Hair Hairdressing (Switzerland)
- Prati Group (Italy)
- Entel (Chile)
- Tenuee (Spain)
- Pharmacie C.C Carouge (Switzerland)
- Pharmacie Grottes Beaulieu (Switzerland)
- Vis à Vis (Bosnia)
- Ideal Trends (Spain)
- Corum (Switzerland and Shanghai)
- Choa Bungalow (Singapore)
- Link Projects (Malta)
- BMW at Paragon Shopping Center (Singapore)
- Telenor (Bulgary)
- Fur Deco (Greece)
- Dean Gera (Malta)



STEFANEL

Krakov, Poland

Flooring installation in the retail fashion store Stefanel at the shopping center Gallery Kzimirz. 200m² of HDF solution.





SQ1802
Sequoia Pastel Oak



SAGRADA FAMILIA

Barcelona, Spain

200 m² installed in the exclusive souvenir shop located within the emblematic Sagrada Familia Temple of Barcelona. Raised Access floor solution.





SC3010
Synchro Plank
Harmony Light



BÜTLER

Liestal, Switzerland

Installation of 218m² in a men fashion shop.
HDF solution.



CT1703
Tradition Lime Washed



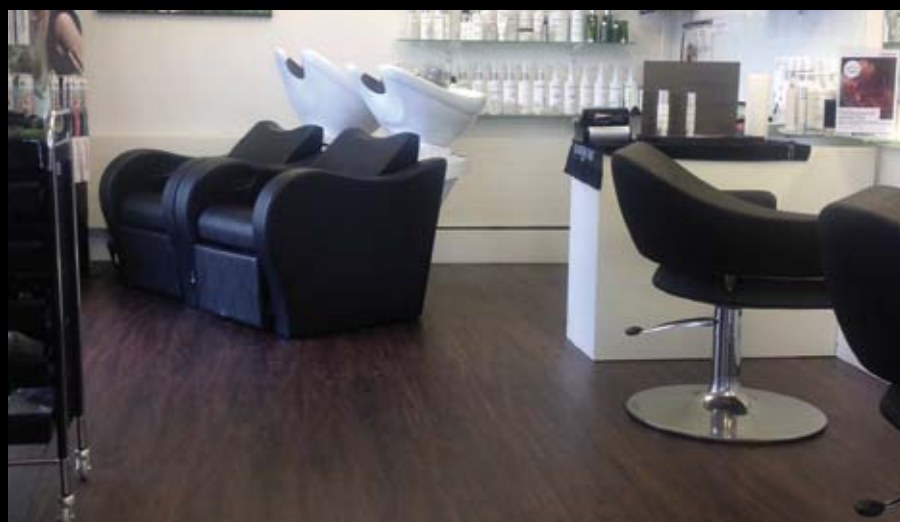
SHAPEHAIR

Kiesen and Köniz, Switzerland

Installation in two different hair saloons for the same company. 85m² in Kiesen and 125m² in Köniz.



WD1003
Wood Wenge





PRATI HOUSE

Reggio Emilia, Italy

Flooring installation at Prati's showroom and shop. 400m² of HDF solution for our official distributor in Italy.



SC3002
Synchro Rustic Oak
Stockholm



ENTEL

San Bernardo, Chile

Glue Down applications on furniture of a telecom shop. Different front desks pieces to decorate the shop.



WDT2002
Wood White



TENUUE & TERMOPARKET



TENUUE

Barcelona, Spain

Exclusive furniture and flooring showroom in centre of Barcelona. Also in this space you can find art exhibited by the famous artist Puig Marti. In total some 200m² of flooring has been installed of several references and solutions.





SC3012
Synchro Plank
Harmony Classic



SC3011
Synchro Plank
Harmony Grey



SC3005
Synchro Rustic
Oak Berlin



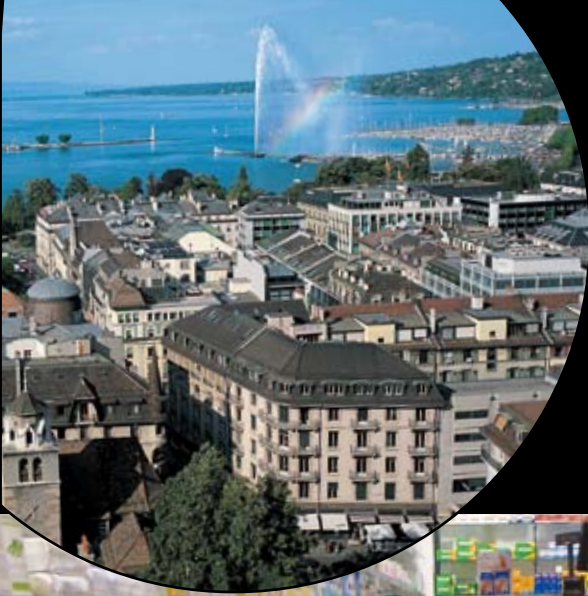
PHARMACIE GROTTES BEAULIEU

Géneve, Switzerland

Clean and neat installation of 150 m²
in a pharmacy with no dilatation joints
HDF solution.



SC3009
Synchro Plank
Harmony White



PHARMACIE C.C CAROUGE

Géneve, Switzerland

Installation of 100 m² in a pharmacy. HDF solution.



SC3009
Synchro Plank
Harmony White



VIS À VIS

Sarajevo, Bosnia

Installation of 350 m² inside of a clothes and accessories shop. Flooring and stairs.





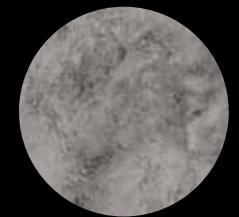
CT1708
Country Rustic Light



IDEAL TRENDS

Tenerife, Spain

Installation of 50 m² in a jewelry store in a shopping center in Tenerife island.



MT1401
Original Metallic Silver



CORUM

Genève, Switzerland

Installation in two shops of this prestigious watchmaker brand, in Genève and Shanghai. Floover is specified for its flooring worldwide.



SC3001
Synchro Rustic
Oak Moscow





CHOA BUNGALOW

Singapore city, Singapore

Flooring installation of 300 m² in a showroom and art gallery.





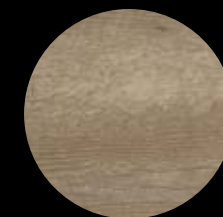
SC3008
Synchro Plank
Harmony Accent

LINK
PROJECTS

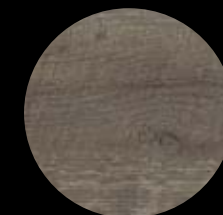
LINK PROJECTS SHOWROOM

Ta' Xbiex, Malta

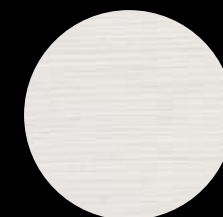
Showroom of Link Projects, our official distributor in Malta. 600m² of different solutions.



SC3002
Rustic Oak Stockholm



SC3005
Rustic Oak Berlin



WDT2002
Wood White



BMW AT PARAGON SHOPPING CENTER

Singapore city, Singapore

Installation of 60 m² for the presentation of new BMW Individual 7 Series in a shopping center. Combination of two different solutions.



CM1305
Cement Grey



CM1304
Cement Dark





TELENOR

Sofia, Bulgaria

Installation in different shops of the mobile telephone company Telenor.





CT1702
Country Tradition
Classic



FUR DECO SHOP

Athens, Greece

Installation of 200 m² in a interior design and furniture shop. Glue Down solution.





SQ1802
Sequoia Pastel Oak



DEAN GERA SALONS

Valletta, Malta

Installation in several hair saloons own by the company in Valletta, St Julian's and San Anton. SplashH2O Light solution.



CM1305
Cement Grey



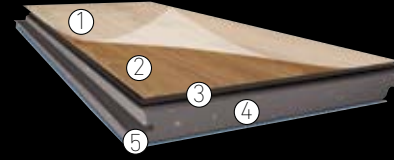
GLUE DOWN



- Traditional Dry Back LVT for Glue Down
- 100% waterproof
- Leveller is required
- No dilatation gap/skirting required

1. Layer of transparent PVC
2. Decor
3. Vinyl

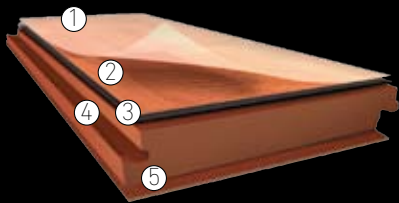
SPLASH₂ LIGHT



- Uniclic System
- 100% Waterproof
- Soundproof layer optional
- Base film not required
- Installation up to 200m² without dilatation joints

1. Layer of transparent PVC
2. Decor
3. Vinyl
4. PVC Rigid 3,2 mm
5. FlooverFlex 1,5 mm (Optional)*

HDF



- Uniclic System
- Surface waterproof
- Base film required
- Installation up to 200m² without dilatation joints
- Compatible click with Splash₂O

1. Layer of transparent PVC
2. Decor
3. Vinyl
4. HDF 6,8 mm
5. Cork 1,2 mm



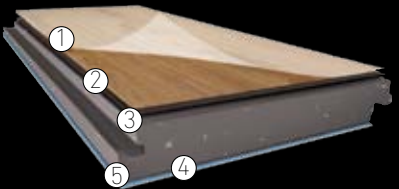
RAISED SOFTCORE



- No need to pre-work the subfloor
- Warm and comfortable
- Excellent noise reduction
- Easy access to the subfloor
- Easy to replace a single tile

1. PVC Top layer
2. High density chipboard 38 mm
3. Aluminium foil

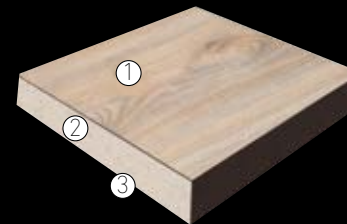
SPLASH₂O



- Uniclic System
- 100% Waterproof
- Base film not required
- Installation up to 400m² without dilatation joints
- Compatible click with HDF

1. Layer of transparent PVC
2. Decor
3. Vinyl
4. PVC Rigid 6,5 mm
5. FlooverFlex 1,5 mm (Optional)

RAISED HARDCORE



- No need to pre-work the subfloor
- 100% Waterproof
- Warm and comfortable
- Excellent noise reduction
- Easy access to the subfloor
- Easy to replace a single tile

1. PVC Top layer
2. High density chipboard 30 mm
3. Aluminium foil

HEADQUARTERS

C/ Selva, 4 2nd Floor
08820 El Prat de Llobregat · Barcelona (Spain)
T. +34 938 913 310
info@flover.com

FACTORY

Palü Daint
CH-7537 Müstair (Switzerland)
T. +41 818 503 944



